



Align your ESG initiatives and reveal future opportunities with data

We help you to optimise sustainability and maximise profitability.

info@esgcloud.online | www.esgcloud.online

Corporate Park South, Midrand, South Africa



High quality ESG data

Quantify and visualise your ESG efforts in real time, reducing time and adding value.



Our promise

- Internationally recognised technology
- Mapped content library
- Agnostic to standards
- Initiate and track ESG actions
- Manage and report ESG in one place

WE ENABLE YOU TO



Standardise reporting
our software is preloaded with relevant fields to produce fully compliant and complete report



Drive initiatives
expertise and associated tools that are instrumental in driving forward key initiatives



Track major events
enabling the capturing and reporting of relevant data when tracking major events



Align with international frameworks
link disclosure to any international sustainability framework



The culmination of years of environmental, social and governance development.

As the role of companies in society continues to come under scrutiny, ESG management is at the heart of the strategic and operational issues that are critical to your organisations' long-term sustainability.

ESGCloud is a scalable solution that works for any organisation, from small to medium-sized private equity asset managers who wants to track and manage the ESG initiatives, to large companies that need to standardise and aggregate their ESG data across fragmented operations.

Large organisations may be required to report their ESG-related data on behalf of

investors, shareholders, or to fulfil listing reporting requirements. Disclosure of accurate, standardised ESG information is a key part of these organisations' licence to operate.

Good corporate sustainability performance is associated with good financial results.



Let high-quality ESG data create a competitive advantage

KEY FEATURES

ESGCloud helps you make better, informed decisions. Our easy to use web interface and mobile application facilitates the cross-company communication and transparency necessary to improve user adoption, safety performance and ultimately, your business.



SaaS (Software as a Service)



Library of default indicators and questions



Scheduling and notification engine



Intuitive navigation

High quality data to inform strategic thinking and increase value

Your single source of ESG truth from which disclosures against global frameworks can be made:



STANDARDISE

Leverage ESGCloud's pre-configured templates or upload your own ESG reporting templates to bring consistency to your ESG reporting content, and report against any international standard. ESGCloud's consistent and reliable reporting tools promote high-quality data, enabling your organisation to make the right ESG decisions.



AGGREGATE

Gather high quality ESG data from global operations through a robust scheduling and notification engine, and aggregate that data at various levels of your organisation in a way that allows you to tell your ESG story. Drill down and segment your information by industry, topic, or location to improve transparency and maximise outcomes.



MANAGE

ESGCloud's software enables your organisation to manage and report on the topics that are most material to its operations, all in one place. This allows your organisation to set benchmarks and manage target based on accurate data points, while tracking risks and opportunities throughout the lifecycle of an initiative.

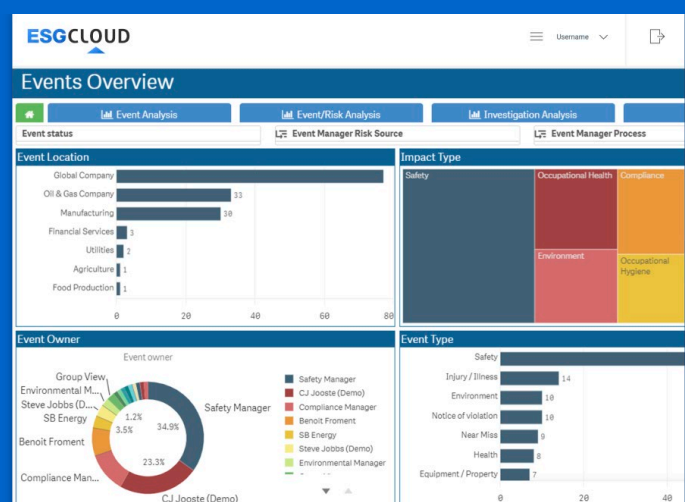
ESGCloud provides an accurate picture of the sustainability health of the business, and allows you to make better decisions based on data.



ESGCloud enables you to:

- Bring consistency to your ESG content
- Leverage pre-configured ESG templates or upload your current reposting templates
- Manage your ESG actions plans in our place, across multiple operations
- Present your data in a way that allows you to tell your ESG story
- Meet corporate performance requirements
- Protect your brand and reputation

Rather than collecting pieces of information from various sources, ESGCloud standardises the collection of data based on the material content, resulting in high quality data that can be used to inform strategic thinking and increased value.





An accurate picture

ESGCloud provides an accurate picture of the sustainability health of the business, and allows you to make better decisions based on data.



info@esgcloud.online | www.esgcloud.online

Corporate Park South, Midrand, South Africa

